



# KIDS FUTURE

## Publication International

### Teacher's Manual 1

#### Computer Part-1

##### Chapter-1 Introduction To Computer

###### Oral Skills

1. Do it yourself

###### Writing Skills:

###### Multiple Choice Questions:

2. Tick (✓) the correct option:

- a) ii) Bike
- b) i) Computer
- c) ii) Toffee

3. Answer the following questions:

- a) Two machines we see every day are Bus and Aeroplane.
- b) Two machines which run on electricity are: Refrigerator and Computer.
- c) Three machines which run on fuel are Bus, Car, Aeroplane.
- d) Two main features of machine are:
  - (i) They help us in doing our work easily.
  - (ii) They save our time and work quickly.

4. Write 'T' for true statement and 'F' for false statement:

- a) True      b) False      c) True

5. Write the names of any five man made things:

- a) Bus                      b) Refrigerator
- c) Aeroplane              d) Cake) Car

###### Activity:

Do it yourself.

##### Chapter-2 Computer A Wonder Machine

###### Oral Skills

1. Do it yourself

###### Writing Skills:

###### Multiple Choice Questions:

2. Tick (✓) the correct option:

- a) ii) useful              b) ii) man
- c) ii) electricity

3. Answer the following questions:

- a) Two machines that work with electricity are Refrigerator and Computer.
- b) Two devices that work with man's energy are Bicycle and Rickshaw.
- c) Two common features of machines are:
  - (i) They make our work easier and comfortable.
  - (ii) They save energy and function accurately.

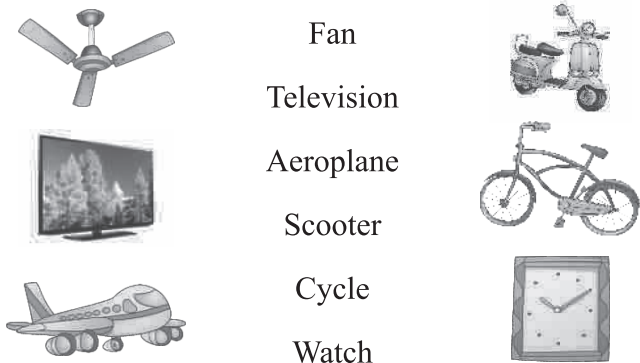
4. Write 'T' for true statement and 'F' for false statement:

- a) True      b) False      c) False
- d) True

5. Rearrange the letters to get the names of places where computer is used:

- a) OHME              –      HOME
- b) OSCHOL           –      SCHOOL
- c) OSPITAH           –      HOSPITAL

6. Given below are some machines and their pictures. Match them correctly:



**Activity:**

Do it yourself.

### Chapter-3 Computer & It's Uses

#### Oral Skills

1. Do it yourself

#### Writing Skills:

#### Multiple Choice Questions:

2. Tick (✓) the correct option:

- a) iii) Monitor      b) iii) E-Mail  
c) ii) CPU

3. Answer the following questions:

- a) Three uses of a computer are:  
(i) We can send and receive e-mails.  
(ii) We can write letters.  
(iii) We can do designing work.
- b) Two places where computers are used are:  
(i) Bank  
(ii) Hospital
- c) Computer is used in a factory to maintain records of salary and employees.
- d) We can check on computer any information through Internet.

4. Fill in the blanks. Taking words from the help box:

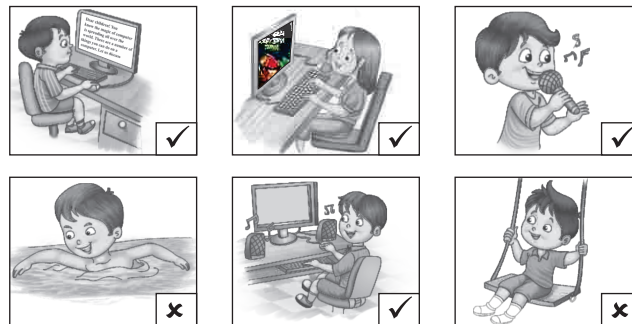
- a) A teacher teaches us about a computer in school.
- b) People in offices work on the computer.
- c) A pilot in aeroplane uses a computer.
- d) Computers are used in Bank and Hospital.

5. Take out the places where computers are used. Circle them properly:

Do it yourself.

6. Activity:

1. Tick (✓) which you can do on a computer:



### Chapter-4 Parts of Computer

#### Oral Skills

1. Do it yourself

#### Writing Skills:

#### Multiple Choice Questions:

2. Tick (✓) the correct option:

- a) i) Keyboard      b) i) Brain  
c) iii) Monitor

3. Answer the following questions:

- a) Two uses of a mouse are:
- b) A mouse has buttons.
- c) CPU is the assembly of different parts.
- d) It is called the 'Brain of the Computer'. It receives our direction to solve problems. It is connected with others parts of the computer. The CPU is the store-house of all the input matter.
- e) The full form of C.P.U. is 'Central Processing Unit.

4. Rearrange the letters to get the names of places where computer is used:

- a) YEODKRBA – KEYBOARD  
b) PUC – CPU  
c) ITONMRO – MONITOR  
d) OUEMS – MOUSE

#### Activity:

1. Watch the pictures and tell who I am?

- a) MONITOR      b) KEYBOARD

### Model Test Paper - 1

1. Tick (✓) the correct option:

- a) ii) Man      b) i) Keyboard  
c) ii) Toffee      d) iii) E-Mail



## Chapter-7 MS-Paint: The Colouring Task

### Oral Skills

1. Do it yourself

### Writing Skills

#### Multiple Choice Questions:

2. Tick (✓) the correct option:

- a) iii) Line Tool                      b) ii) Line  
c) ii) Eraser Tool

3. Answer the following questions:

- a) We find Fill with Color in Colors Group.  
b) Rectangle Tool is used to draw a rectangle.  
c) Eraser Tool is used for erasing our drawing or a part of a picture. It works like normal eraser.

- d) Three groups we find on the Home Tab are:

- (i) Tools Group  
(ii) Shapes Group  
(iii) Colors Group

4. Fill in the blanks with words given in the help box:

- a) Shapes Group contains different ready-made shapes.  
b) It works like our normal eraser.  
c) You choose Colors from Colors Group.  
d) You draw in Drawing area.

### Activity:

1. Search the names of different tools in the following grid:

- a) Eraser                      (6<sup>th</sup> column starting from 2<sup>nd</sup>)  
b) Line                        (4<sup>th</sup> row starting from 2<sup>nd</sup>)  
c) Find it yourself.  
d) Rectangle                (8<sup>th</sup> row starting from 1<sup>st</sup>)  
e) Pencil                      (1<sup>st</sup> row starting from 3<sup>rd</sup>).

---

## Chapter-8 Kinds of Computer

### Oral Skills

1. Do it yourself

### Writing Skills

#### Multiple Choice Questions:

2. Tick (✓) the correct option:

- a) i) individual                      b) iii) Desktop  
c) i) Laptop                          d) i) Mainframe

3. Fill in the blanks:

- a) A personal computer is general purpose computer.  
b) Therefore, it is used in a single location constantly.  
c) It is handy and light.  
d) It is a small computer that fits in your palm.  
e) Many people can work on it simultaneously.

3. Write 'T' for true statement and 'F' for false statement:

- a) False                                      b) False  
c) False                                      d) True

4. Answer the following questions:

- a) A Mainframe Computer is a big and powerful computer system. It has the capability to support more powerful devices. It is used in big industries. Many people can work on it simultaneously.  
b) A Palmtop Device is a small computer that fits in your palm. It has a small screen and compressed keyboard. It is so small that one can easily carry it in one's hand.  
c) Desktop Computer is a computer which widely popular for daily use in the offices and houses. It is kept on a table. You can work on a desktop computer sitting in front of it. It is difficult to carry. Therefore, it is used in a single location constantly.  
d) A Tablet Computer is a one-piece mobile computer. A Tablet Computer has a touch screen.

### Activity:

1. Pictures of different types of computer are given below. Identify them and write their names:



Mainframe Computer



Desktop Computer



Laptop Computer



Palmtop Device

## Model Test Paper - 2

### 1. Tick (✓) the correct option:

- a) ii) Alphabet Key
- b) ii) Once
- c) i) Individuals
- d) ii) Alphabet Key

### 2. Write 'T' for true statement and 'F' for false statement:

- a) False    b) True    c) False

### 3. Fill in the blanks:

- a) Therefore, it is used in a single location constantly.
- b) The keys are mainly of three types.
- c) It works like our normal erasers.

### 4. Answer the following questions:

- a) A Palmtop Device is a small computer that fits in your palm. It has a small screen and

compressed keyboard. It is so small that one can easily carry it in one's hand.

- b) We type numerals by using number keys.
- c) Space Bar Key is used to provide gap between the words or letters.
- d) A mouse pointer is an arrow seen on the computer monitor when we move the mouse.

### 5. Match the following:

**I**

**II**

- 1. A Mouse is used to draw (iii) pictures
- 2. A small arrow moving on (iv) mouse pointer screen is
- 3. Keep your Index Finger (i) on the left button
- 4. Keep your Middle finger (ii) on the right button

### Project Work:

Do it yourself